



THE NEWSLETTER LANDIS ARBORETUM

Esperance, New York

FALL 2003

VOLUME 22, NO. 4

Arboretum Begins Major Renovation

By Fred Breglia, Head of Horticulture and Operations

WHAT'S Inside

- 2 From the Garden
- 2 Thank You
- 3 Holiday Luncheon
- 5 Columnar Scot's Pine
- 6 Wish List
 - Breglia Memorial Tree Fund
 - New Members
- 7 Registration Form
- 7 Spring Courses
- 8 Calendar

If you have been out to Landis recently you would have noticed some very impressive improvements to the grounds. A \$50,000 grant from the New York State Environmental Protection Fund (EPF) is helping to pay for major renovations over the next two years. The focus of this grant is to improve natural areas and increase accessibility for recreation.

Phase One

Bulldozers, backhoes, and full-sized dump trucks moved throughout Landis ripping up trees, shrubs, and grading tons of topsoil. The Arboretum is the last place anyone might expect the tearing out of thousands of trees, shrubs, and brush, but this work is being done by design. The species that we have been removing are not native species but rather invasive aliens. Common buckthorn, black locust, and tartarian honeysuckle are the main targets for removal. They grow fast, are very adaptable to various sites, and spread by horizontal roots. Eventually, impassible thickets crowd out native species. In fact, one of the greatest threats to global biodiversity is invasive species.

The most highly visible renovated areas include the hillside to the left of the visitor kiosk and the roadside areas heading uphill toward the Fred Lape memorial stone. These areas, once covered in thickets of invasive species, are now blanketed by grass. The grass will prevent erosion. Trees and shrubs are already being planted in some of these areas, making our already beautiful site much more attractive and visitor-friendly.

The renovation project also includes re-digging our three ponds and creating a fourth pond. The willow pond, which had been leaking badly and actually dried up last year, was re-dug and now is already filled with water. The meeting house pond has been doubled in size and deepened. The farm pond behind the barn was slightly enlarged and its leaks plugged. According to George Steele, our nature educator, it is one of the best instructional ponds in the state for programs on native aquatic pond life. The fourth pond was added near the rhododendron collection to add a water source on the collections side of the road and to help dry up some of our wet trails by

—more on page 4.



You are invited to attend

A Holiday Celebration

A Gourmet Luncheon and
Decorating for the Holidays
Demonstration

See page 3 for details & reservations.



PHASE ONE: Renovation of the Barn Pond.
More photos on pages 4 and 5.

Photo by Fred Breglia

THE LANDIS ARBORETUM NEWSLETTER is published quarterly for its members. The Arboretum's mission is to foster the appreciation of trees and other plants and their importance in our environment.

EDITORIAL BOARD

David Buddle, Sonja Javarone, Susan Sagendorf, and Gloria Van Duyne

EDITOR

Sue Gutbezahl

CONTRIBUTORS TO THIS ISSUE

Fred Breglia, Anne Jaster, Sonja Javarone, Roberta Krause, and Gloria Van Duyne

PRINTER

Miller Printing and Litho Amsterdam, NY

BOARD OF TRUSTEES

Rick Ohlerking, *President*
Nick Zabawsky, *Vice President*
Diane Spranger, *Treasurer*
David Browning, *Secretary*

Paul Blair, David Browning, John Brust, Steve Coonradt, Michael Durante, John Fritz, Doug Goodale, Florence Grimm, Lawson Harris, Ken Hotopp, Sonja Javarone, Cathy Lewis, Rick Ohlerking, Mervyn Prichard, Susan Sagendorf, Diane Spranger, Scott Trees, Earl Van Wormer III, Nick Zabawsky

ARBORETUM STAFF

Gloria Van Duyne, *Executive Director*
Fred Breglia, *Head of Horticulture and Operations*

Roberta Krause, *Office Manager*
George Steele, *Science Educator*
Randy Proctor, *Grounds and Maintenance*

Address correspondence to:
Newsletter Editor, Landis Arboretum
P.O.Box 186, Esperance, NY 12066.
phone 518-875-6935
fax 518-875-6394
email landis@midtel.net
http://www.LandisArboretum.org

FROM THE GARDEN

Gloria Van Duyne, Executive Director

You missed a great event if you were not able to attend the fall plant sale. For a change, the weather was cooperative and the plant selection was exceptional. We had an extensive and striking display of hydrangeas in full bloom left from the spring sale. Conifers ranged from \$2 bargains to such unusual specimens as weeping larch and weeping cypress. Trees, shrubs, and perennials for sun and shade included popular steadfast sellers and unusual cultivars.

Net proceeds from the fall sale were \$6,000. With the spring sale, a total of \$25,000 was raised for the day-to-day operations of the Arboretum. Thank you for your support and good gardening choices.

On December 5 we join with SUNY Cobleskill's culinary program to offer a gourmet luncheon and silent auction to the public. (See invitation on page 3.) SUNY chefs Keith Buerker and Bob Sielaff and their students will prepare a delicious epicurean lunch. A holiday decorating demonstration and silent auction of holiday wreaths and centerpieces will follow, making for a truly delightful day. This event allows SUNY's culinary students to provide a grand buffet to the public and the net pro-

ceeds will go toward Landis's programs. Even if you are unable to attend this event, I recommend that you experience what this local culinary program has to offer by dining at SUNY Cobleskill's American Heritage Restaurant during its regular hours. The phone number for reservations is (518) 255-5425.

By now you should have received the Arboretum's annual appeal in the mail. We rely heavily on keeping the Arboretum running with this fundraiser. Our funding comes from several sources including grants, which provide much needed funds for special projects such as pond renovation and the Tough Trees for Tough Sites collection. But grants rarely cover day-to-day expenses, such as phone, property and liability insurance, heat, and staff. Staff members organize volunteers, answer your questions, teach your pruning courses, take care of the collections, and apply for grants to cover as much of our needs as possible. Member support plays a substantial role in maintaining the Arboretum. I urge you to consider giving generously.



Photo by Fred Breglia

MANY THANKS

TO THE FOLLOWING PEOPLE AND BUSINESSES FOR THEIR GENEROUS GIFTS AND CONTINUING SUPPORT—

Everyone who helped make our Fall Plant Sale a very successful one.

Everyone who donated baked goods, books, and plants for the plant, book, and bake sales: **Jane Barton, Eleanor Wages, Jodi Krause, Rose, Elliot, Gill O'Brien, Paul Blair, Gina Nielsen, Marie DiCristofaro, Chery Fisher** and anyone we missed.

Durward Degroff for his wonderful carpentry work.

Fred's Pruning Swat Team.

Terry Staley and Sonja Javarone for their continued help with plant records.

Jane Kirstel and Nicole Dennis for their continued support in the office.

Mrs. Ona Curran for a lawn mower, trimmer and other equipment

Don Orr and Jim Schlemmer for making and donating products made from the great oak.

The Private Industry Council students for their continued support and hard work for maintaining our grounds.

Provost Brothers Well Drilling for their continued support.

Deb and Alden Banks for the donation of the pick-up truck.

Barbara Hunt and Judith Lott for her work at the Acorn Shop.

Ruther's Machine Shop, Esperance

Hubbell Galvanizing, New Hartford, for their help with the window guard on the barn.

Smitty's Construction for their renovation work.

Howard Stoner for his help with machine maintenance.

Sonja Javarone, Mervyn Prichard, and Ken & Marion Hotopp for your help at the Schoharie County Harvest Festival.

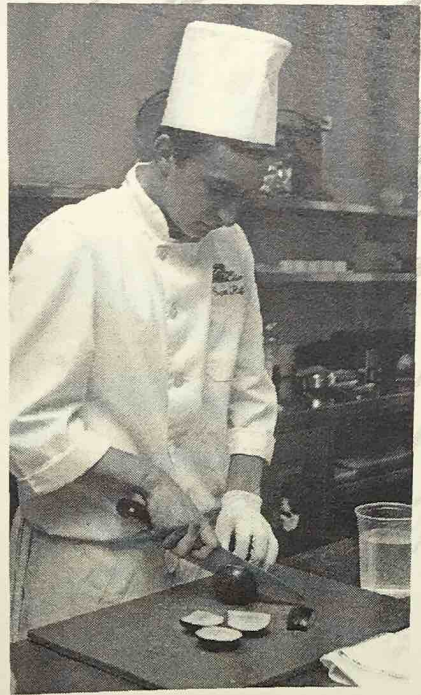
AND TO OUR CORPORATE MEMBERS FOR THEIR GENEROSITY.

Patrick Clear, ECOS Glenbrook Farm, Viktoria Serafin

Gardener's Workshop

Jean Sweet Interiors, Inc.

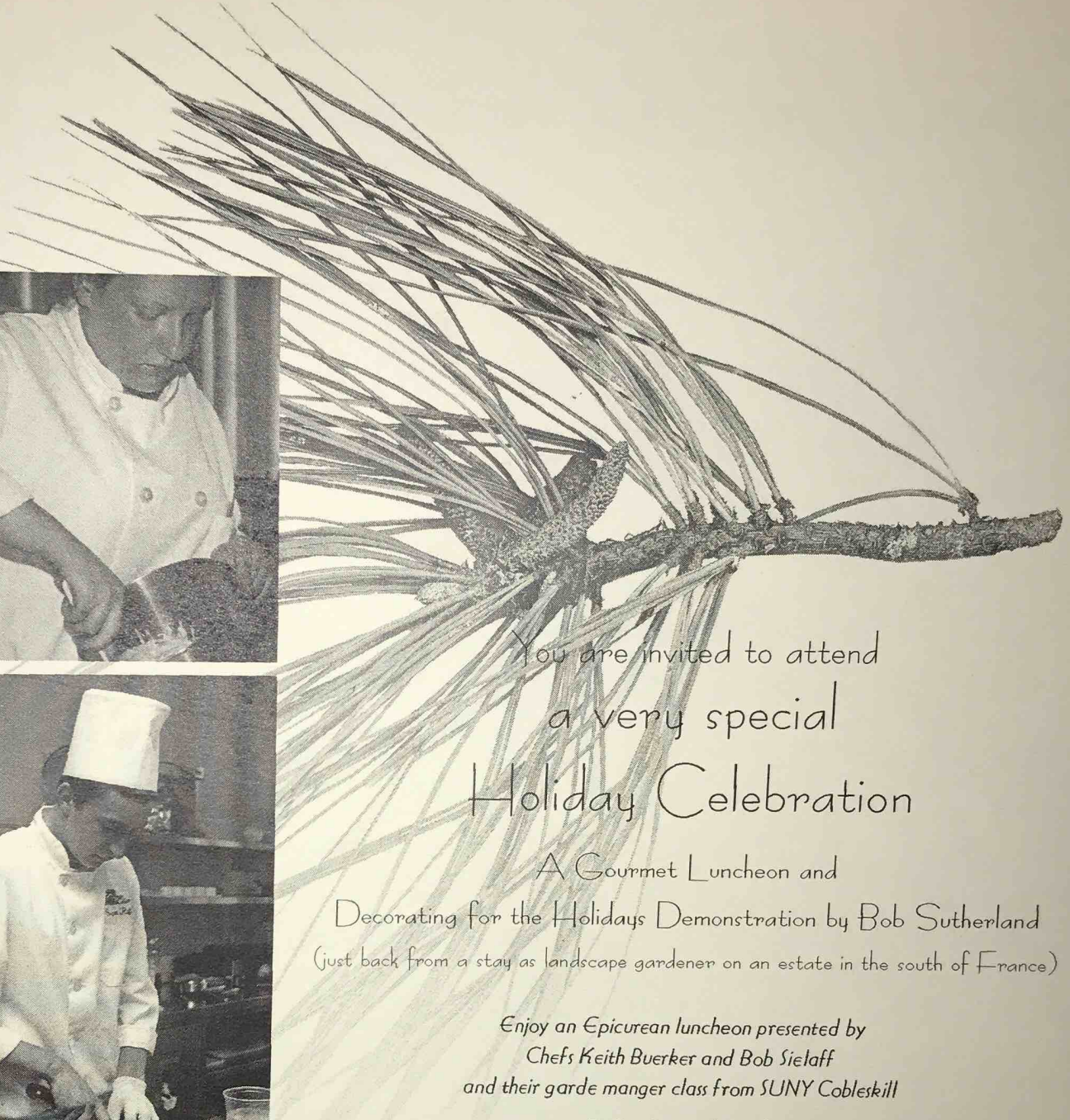
Temper Corp—John Rode



Jamie Miller (mixing) Culinary Arts student at SUNY Cobleskill

Sean Rafferty (slicing) Culinary Arts student at SUNY Cobleskill

Photos by Dick Danielson



You are invited to attend
a very special
Holiday Celebration

A Gourmet Luncheon and
Decorating for the Holidays Demonstration by Bob Sutherland
(just back from a stay as landscape gardener on an estate in the south of France)

Enjoy an Epicurean luncheon presented by
Chefs Keith Buerker and Bob Sielaff
and their garde manger class from SUNY Cobleskill

Friday, December 5th

Luncheon is at 11:30. Demonstration is at 1:00 p.m.

at the SUNY Cobleskill, Champlin Lounge

Cost is \$15.00 per person. Cash wine bar.

A silent auction of wreaths and centerpieces will allow guests
to take home a unique holiday decoration.

This event allows SUNY Cobleskill culinary students
the opportunity to provide a Grand Buffet for the public.

Funds raised from this event go toward Landis Arboretum programs.

.....
Reservations and payment are required by December 1.

Number of reservations _____ @ \$15 each. Total enclosed \$ _____

I cannot attend, but would like to make a donation to the Landis Arboretum.

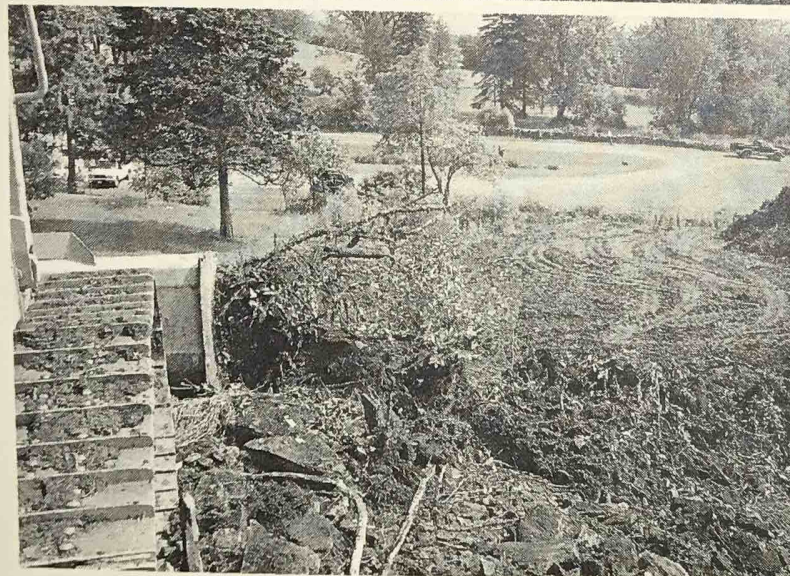
Please make your check payable and send to Landis Arboretum, PO Box 186, Esperance, New York 12066

Arboretum Begins Major Renovation

—continued from page 1.



Photos by Jacarone



Top: Dead tree and brush are removed from hillside area above visitor parking lot.

Right: Arboretum staff member Randy Proctor poses for progress.

Far right: View of new road above the parking lot.

Page 5, left: Newly enlarged Barn Pond.

Page 5, right: Willow Pond refilling after doubling in size and depth.

Photos by Fred Breglia



diverting some of the natural movement of water. Smitty's Construction of Esperance was hired to work with the heavy equipment needed to accomplish these tasks. The work for the first phase of this grant totals approximately \$20,000.

Phase Two

The second phase has already started with the addition of new trees. In fact over \$1,200 worth of new trees, some of them over 15 feet tall, have been planted. More trees are already ordered and will be planted by the time you read this newsletter.

Phase Three

The third phase of this grant focuses on improving and expanding trails throughout our natural areas. Landis will become friendlier to visitors as a result of smoothing the rough areas and spanning culverts over wet areas. Native trees and shrubs will receive new photo-metal labels, adding greatly to the informal learning obtained by walking the trails. Trailhead signs will be installed, making it easier to find the start and end of each trail. Brian Phillips is making directional signs to help visitors explore our many trails as part of his Eagle Scout requirement. In addition, miles of trails will be added to our newly acquired Bass woodland. The woodland is contiguous to our eastern boundary, making over 45 acres available for hiking, snow shoeing, and cross-country skiing. The Bass woodland includes everything from mature woodlands to grassy meadows and also has very large white and red oaks worthy of being showcased. A new plaque thanking Mr. Bass for his generosity designates the entry to the Bass woodland.

Phase Four

The fourth phase is planned for next year and includes wetland stabilization in the woodland located along the path to the Great Oak. This will make the trail more friendly to users and at the same time allow visitors to walk along the edge of our wetland to see the many native species preferring this type of habitat.

The natural areas enhancement will be great for Landis. Visitors who already frequent our site will enjoy themselves even more, and new visitors will discover one of the best places to explore in our region. Many things are happening at Landis Arboretum. It is a very exciting time. Come out and enjoy your Arboretum.

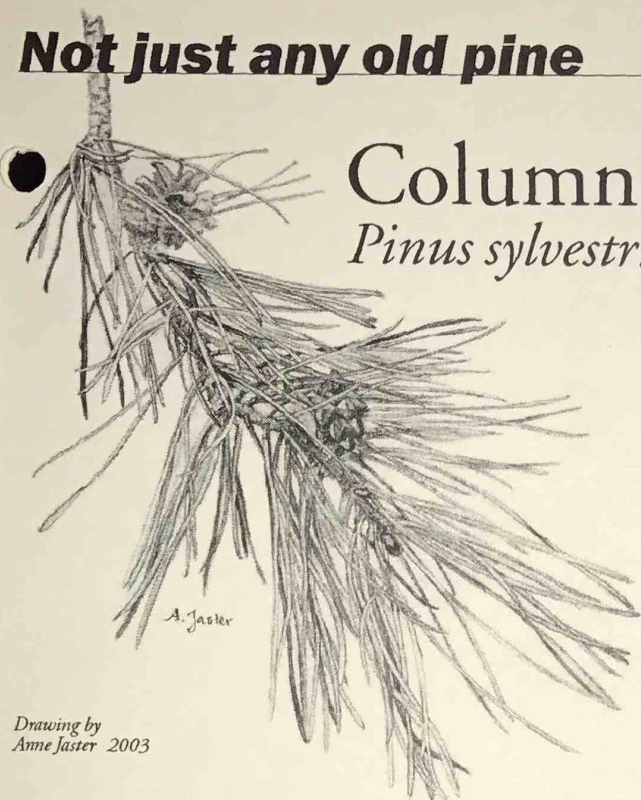


Not just any old pine

Columnar Scot's Pine

Pinus sylvestris 'Fastigiata'

by Sonja Javarone



Drawing by
Anne Jaster 2003

Columnar Scot's pine was first identified in 1856 and is a common form found in France, Finland, Norway, and Germany. The species (*P. sylvestris*) is the most widely distributed of any pine and is found in Europe through Siberia to the Amur region of East Asia, and in the mountains of Crimea, Caucasia, Asia Minor, Iran, and the Alps. References are not consistent in the naming of the columnar Scot's pine. *Pinus sylvestris* 'Fastigiata' is a cultivar name, but the tree is botanically *Pinus sylvestris* f. *fastigiata* as it has a native wild distribution. The species has many varieties, forms, and cultivars varying in size, growth habit, color of needles, color of bark, size and shape of cones, and unique characteristics typical of populations in a particular region. Columnar Scot's pine is but one of the unique variations of the species.

The columnar Scot's pine has a very narrow growth habit reaching a height of 15 meters or more. It is sometimes called the sentinel pine. The branches are stiff and tightly arranged close to the trunk. The bark is bright orange. The needles are blue-green and shorter than the species. The cones are small and ovate. The tree is hardy in USDA Zones 2 to 7. We have two Landis specimens, one on the slope behind the

homestead and the other near the Fred Lape trail in the choice conifers.

The landscape value of columnar Scot's pine is similar to that of the species. It is a picturesque, sun-loving specimen tree, a good Christmas tree in a plantation setting, and a nice windbreak in a shelter-belt planting. This particular form is especially useful in areas needing a narrow growth habit. It grows in a variety of soils and is tolerant of air pollution in cities.

The seeds have no dormancy and will germinate without stratification. Care should be taken on selecting the proper variety, form, or cultivar as each has its own characteristics and climatic requirements. The one requirement of all Scot's pines is full sun. It is not shade tolerant.

In northern Europe, Scot's pine is associated with Norway spruce (*Picea abies*) and is dependent on fire for regeneration. If fire is suppressed, the spruce and hardwoods will replace the Scot's pine. On sandy soils it will form a deep taproot in addition to the lateral roots common for most pines. In pure stands, it will form root grafts and the trees will share water and nutrients. The species has adapted to many habitats. In the Northeast and Great Lakes regions of the United States, it has naturalized and is associated with pine, spruce-fir, oak-hickory, maple-beech-birch, and aspen-birch ecosystems. It is one of the most important timber trees in Europe. It has even proven successful in reforestation of former coal mine sites. Trees in Europe often reach 200 years old and some are 1,000 years old. Even after death, 4,000- to 7,000-year-old logs buried in the bogs of northern Europe are prized for building, carving, furniture, rope, fuel, torches, thatches, and salmon spearing. Scientists have used the tree rings of these ancient logs to reveal climatic changes in the past. Artists love the beauty of the tree. The pine grosbeak eats the buds. Porcupines consume the bark. Deer and moose browse on the foliage.

We can all appreciate the versatility of columnar Scot's pine and the Scot's pine species as a whole. A tree for all seasons with a rich history, the Scot's pine is one of the most outstanding species in the horticultural trade.



WISH LIST

We are looking for the following items (or estimated dollar amount to purchase items).

Books

Lilacs: The Genus Syringa, Fr. John L. Fiala

Equipment

- Bird feeders and seed
- Projector for PowerPoint presentations
- Laptop computer
- Picnic tables and benches (\$250)
- Professional climbing saw (\$150)
- DR brush mower (\$2500)
- Hardback rakes, shovels, loppers, and mulch fork (\$200)
- Trowels and other small gardening tools
- Troy Built hand cart

And always, the large tractor—

- A John Deere 790 (or machine of equal quality) 4wd, 30hp, with backhoe and loader (\$20,000)
- 4wd pick-up truck

Acorn Shop

- Clear plastic containers for storage:
Three 6" deep x 11" high x 26" long
Ten 9" deep x 11" high x 15-18" long



(518) 439-8105

Sandra S. Walck
Garden Design

*Installation
& Maintenance
with Ecological
Emphasis*

20 Dykeman Road
Delmar, NY 12054



ALL OUR VOLUNTEERS ARE INVITED TO A HOLIDAY POTLUCK LUNCHEON

On Tuesday, December 16 at noon.

Join us in an informal get-together to meet other volunteers and visit. Find out what has been going on at the Arboretum, what is planned for the future, and offer suggestions on what volunteers can do.

Let us know if you are planning to attend and the dish you are bringing.

Call at 875-6935 by Friday, December 12.

See you at the Arb!

WISH LIST

Project Wish List

We are looking for volunteers familiar with the following tasks (or equivalent dollar amount to complete these projects).

- Hand quilters for next year's raffle quilt.
- Stone walls around the greenhouse and walls around perennial garden need rebuilding. (\$800)

Education Wish List

- Animal skins in good condition
- Skulls and bones in good condition
- Insect collections
- Feathers and nests from wild birds
- Local rocks and fossils
- Tree identification books
- Leaf identification books
- Whit enamel pans
- Tall rubber boots
- Magnifying glasses
- Walkie-talkies
- Environmental science tools

WELCOME New Members

Paula & William Blance
Paul & Patty Borgwald
Domenic & Annette Ciannella
Leslie & Todd French
Dr. Thomas Greenwald
Erica Gumaer
Beth Herrick
Raymond Jones
Elizabeth Kauffman
Bill Klee

James & Lois-Ann Koch
Richard Pata Lona, Let It Grow Nursery
Susan Pezzolla
Joan Slingerland
Dawn Smith
Florence & Ludwig Soah
Cecile Stewart
Adelaide & Robert Thompson family
Ellen Tanner

Serving the area since 1992

Let It Grow

Nursery & Greenhouse
Nearly 1000 Varieties of Perennials
Nearly 100 Varieties of Roses
Large Selection of Vegetable Plants & Herbs
Large Selection of Annual Flowers & Hanging Baskets
Extensive Selection of Trees (over 1000) and Shrubs (over 5000)

10 Miles Northeast of Cooperstown on Route 33, 3 Miles Southwest of Cherry Valley
Middlefield Center Road (Route 33)
Open 7 Days A Week 9 am to 6 pm
(607) 264 - 3247

BREGLIA MEMORIAL TREE FUND DONORS

Contributions are being accepted in memory of Fred Breglia's father, Ferdinand (Fred) Breglia, who passed away last winter. The family has asked contributions be sent to the Landis Arboretum for a memorial tree to be planted at the Arboretum.

- | | | | |
|-----------------------------------------------|---------------------------|--------------------------------------------------|------------------------|
| Sam Bass | Carolyn Edwards | John Keeffe & Gloria VanDuyne | John & Susan Sagendorf |
| Cindy King
<i>New as of November 2003.</i> | Rose Elliot | Angelika Koops | Joan Sondergaard |
| Paul Blair | Jack Fritz | Marian Latham | Terry & Sharon Staley |
| Ralph & Nancy Boericke | Bob & Florence Grimm | Marie Loder | Howard Stoner |
| Fred Breglia | Lawson & Priscilla Harris | Carol Loucks | Ken & Carol Wock |
| David Buddle | Christine Heller | Dee & Neil Pederson | |
| Chris Cash | Anne Jaster | Physical Plant Activities,
(Kathleen Kulesza) | |
| | Sonja Javarone | Pat Rush | |

CERTIFICATE PROGRAM IN HORTICULTURE SPRING 2004 CLASSES

CREATING ART WITH TOPIARY

COURSE 2 (Level II): Specialty Gardens
Feb, 2, 9, 16, 23 **Mondays 6-8 pm**
Location: SUNY Cobleskill & Landis Arboretum
Instructor: Jason Stone

Learn what kind of plants to use and how to prune in a way that creates a work of art that will give pleasure for years. Find out how to care for these plants and what special cultural needs they have.

Jason Stone
 is a graduate of SUNY Cobleskill with a BS in Plant Science.

FIRST STEPS IN LANDSCAPE DESIGN

COURSE 1 (Level I)
March 9, 16, 23, 30 **Tuesdays 6-8 pm**
Location: Landis Arboretum
Instructor: Sandra Walck

An introduction to designing the garden of your choice using professional methods of site analysis, evaluating maintenance considerations and aesthetic elements.

Sandra Walck
 owns and operates her own garden design business in Delmar.

HEALTHCARE FOR TREES AND SHRUBS

COURSE 2 (Level I)
April 7, 14, 21, 28 **Wednesdays 6-8 pm**
Location: Landis Arboretum
Instructor: Fred Breglia, ISA, NYSCNP

Learn how to provide the very best healthcare plan for the plants that are the backbone of your landscape.

Fred Breglia, ISA, NYSCNP
 is head of horticulture and operations at the Landis Arboretum in Esperance. He is a graduate of SUNY Cobleskill and a professional arborist.

NAME _____
 ADDRESS _____
 CITY _____ STATE _____ ZIP _____
 PHONE (DAY) _____ (EVENING) _____

PAYMENT METHOD
 CHECK OR MONEY ORDER
 VISA MASTERCARD

CREDIT CARD# _____
 EXPIRATION DATE _____
 NAME AS IT APPEARS ON CARD _____
 SIGNATURE _____

PLEASE CHECK SELECTION(S)
 Courses are \$80 each. If taking course(s) for certification credits, please check boxes at right.

SPRING 2004 Level I
 1 First Steps in Landscape Design certification
 2 Healthcare for Trees and Shrubs certification

SPRING 2004 Level II, Specialty Gardens
 Creating Art with Topiary certification

MAKE CHECKS PAYABLE TO SUNY COBLESKILL. **Registration with payment** is due one week before each course begins. No refunds after this deadline.

AMOUNT ENCLOSED: _____ **TOTAL \$** _____

MAIL TO
 Linda Karker, Office of Conferences & Training, Wieting Hall, Lower Level,
 SUNY Cobleskill 12043-1707

LANDIS
ARBORETUM
LAPE ROAD, BOX 186
ESPERANCE, NY
12066-0186

NON-PROFIT
ORGANIZATION
US POSTAGE
PAID
ESPERANCE, NY
PERMIT #6

CALENDAR Upcoming Events

For registration and information call 518-875-6935 or landis@midtel.net; or use the registration form above. Enclose with payment and mail to: Landis Arboretum, Lape Road, Box 186, Esperance, NY 12066-0186

All events take place at the Arboretum unless noted.

Family programs with nature educator George Steele begin at the Arboretum Meeting House. Programs are free and no registration is necessary. Donations are greatly appreciated. Programs are held rain or shine.

Advance payment and registration is required for all general classes and workshops, trips and Horticulture Certificate classes. Call the Arboretum for workshop fees. For your convenience, payment can be made via Visa or MasterCard.

For a more complete description of course contents, see the "Coming Attractions" insert in the Winter 2003 *Newsletter*.

Horticulture Certificate Courses

Landis Arboretum and SUNY Cobleskill offer courses of interest to professionals and the gardener—they can be taken for credit or noncredit. Unless specified, classes are held at Landis.

NOVEMBER

21 (Friday) 8pm

THE ALBANY AREA ASTRONOMERS
Meet regularly at the Landis Arboretum Meetinghouse for its dark skies and good horizons. Visitors are welcome to join the club's activities.
Free.

DECEMBER

5 (Friday) 11:30–1:00pm

SPECIAL EVENT
Gourmet Luncheon & Decorating for the Holidays Demonstration

Enjoy an epicurean lunch presented by Chefs Keith Buerker and Bob Sielaff and their garde manger class. Decoration demonstration by Bob Sutherland. Silent auction of wreaths & centerpieces.

Cost: \$15 per person
Location: SUNY Cobleskill, Champlin Lounge
Registration and payment due by December 1.

For more information, see page 3.

16 (Tuesday) noon.

POTLUCK LUNCHEON FOR VOLUNTEERS
An informal get together to meet other volunteers and visit. See page 6 for details.
Call at 875-6935 by Friday, December 12.

FEBRUARY 2004

Feb, 2, 9, 16, 23 (Mondays) 6–8pm

Horticulture Certificate Course (Course 2, Level II, Specialty Gardens)
Creating Art with Topiary
Instructor: Jason Stone
Location: SUNY Cobleskill and Landis Arboretum
Cost: \$80. Can be taken for credit or non-credit.

Learn what kind of plants to use and how to prune in a way that creates a work of art that will give pleasure for years. Find out how to care for these plants and what special cultural needs they have.

For registration and payment, use the form on page or contact Linda Karker, Office of Conferences & Training, Wieting Hall, Lower Level, SUNY Cobleskill 12043. Checks are payable to SUNY Cobleskill.

For more information on other Spring 2004 classes, see page 7.